

David Briggs
Permaculture Design Course 2018



Permaculture design principles, ethics and zones

Permaculture Ethics

-  Care of the Earth
-  Care of People
-  Fair Share

& Design Principles

-  1. Observe & interact
-  2. Catch & store energy
-  3. Obtain a yield
-  4. Apply self-regulation & accept feedback
-  5. Use & value renewable resources & services
-  6. Produce no waste
-  7. Design from patterns to details
-  8. Integrate rather than segregate
-  9. Use small & slow solutions
-  10. Use & value diversity
-  11. Use edges & value the marginal
-  12. Creatively use & respond to change



My goal

A home that is harmonious, sustainable, enjoyable and which has a garden that works rather than being a chore, produces fruit, veggies, herbs, eggs and flowers that I can enjoy and share with others in a way that best utilises my limited space.

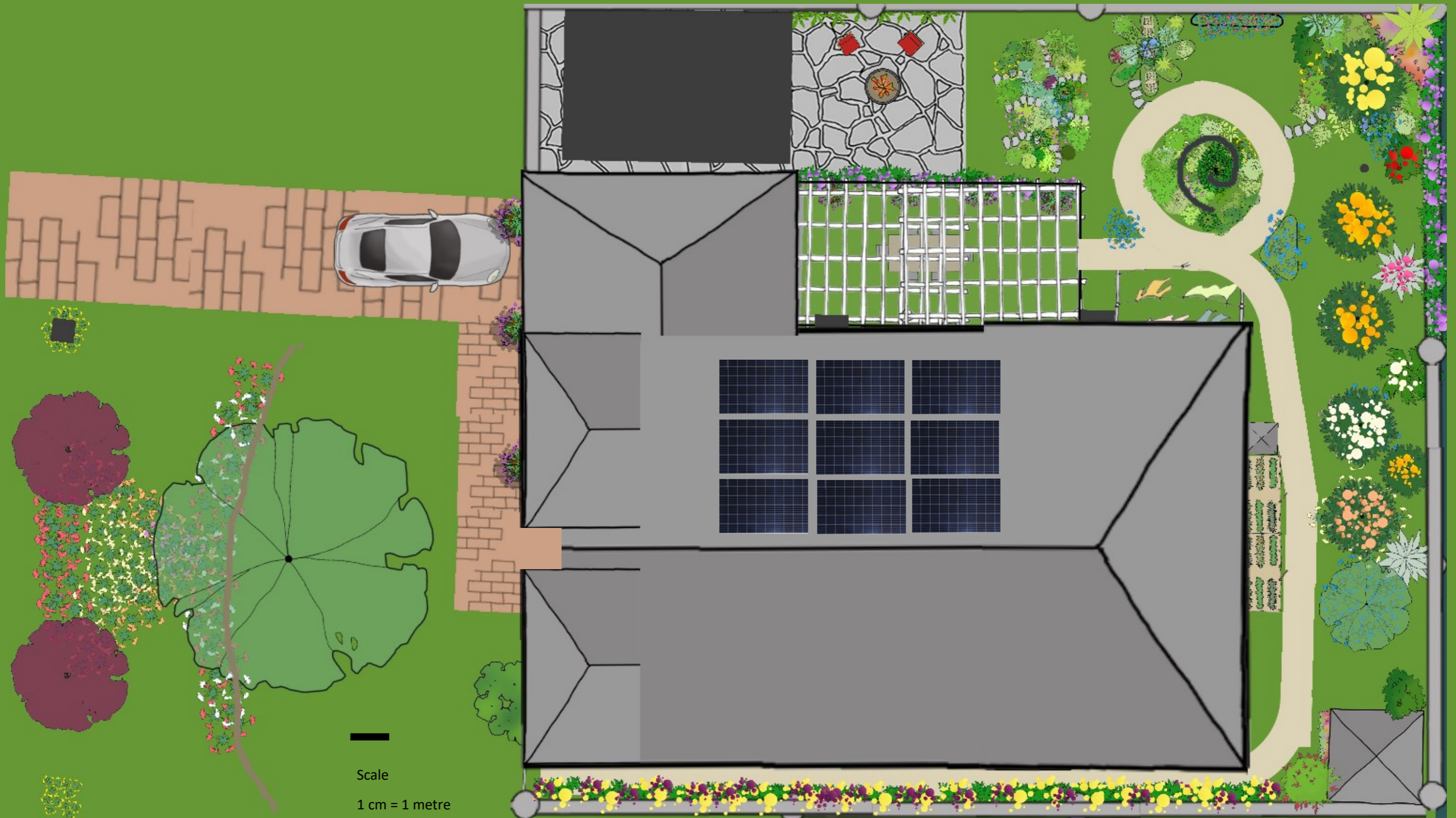


Base map



Scale
1 cm = 1 metre

My design



Scale
1 cm = 1 metre

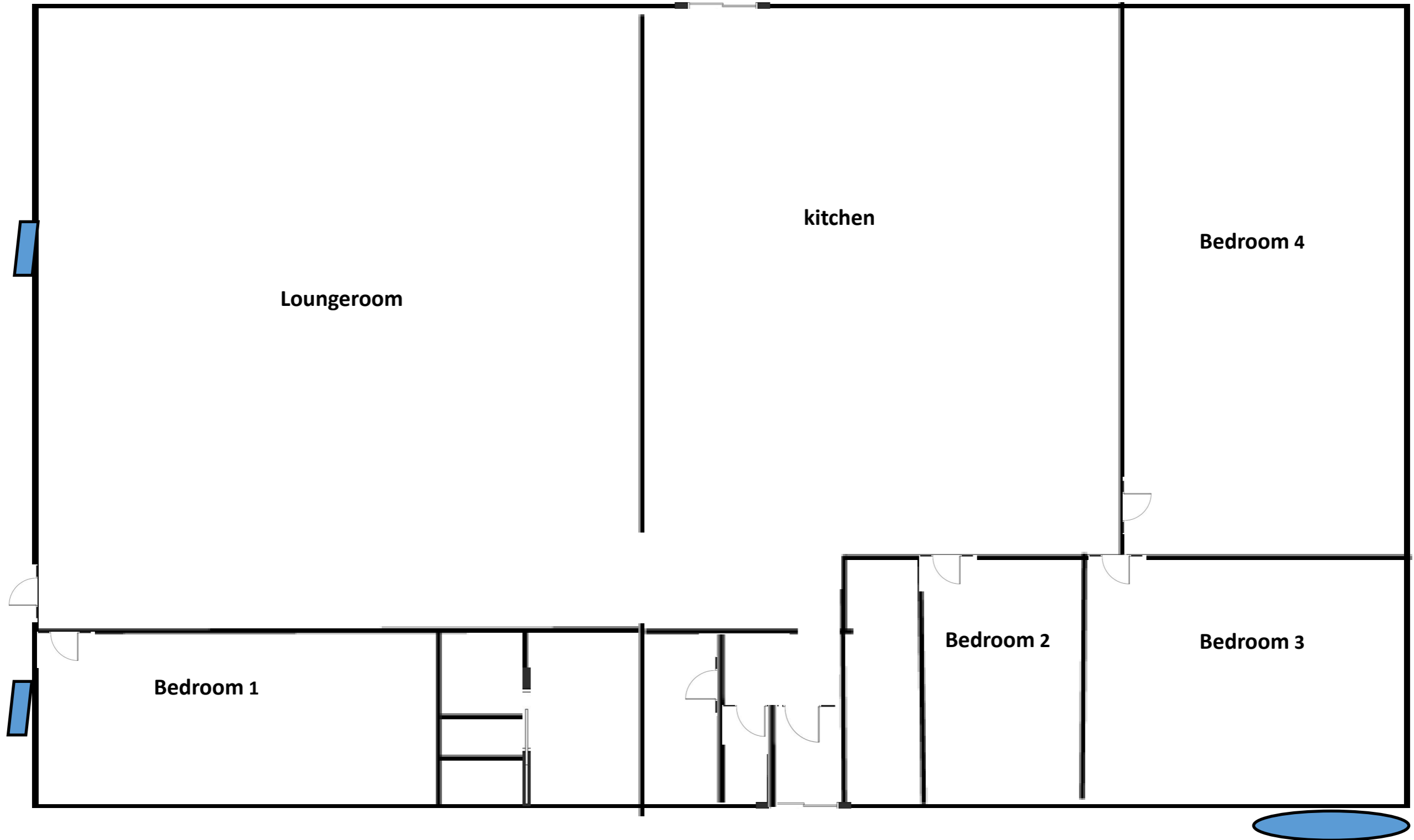
Convert downlights
Water tank
Bokashi compost
Solar panels

Water saving fittings
Trees to block sun
Vines to block sun
Make more inviting for people are

Window awnings
foot switch power boards
Graywater use
Plants inside for pollutants
Water drum (pickling jars)

Cook at home more
Cook from home grown
Isolation
Alternative drying and clothes line
Unplug second fridge

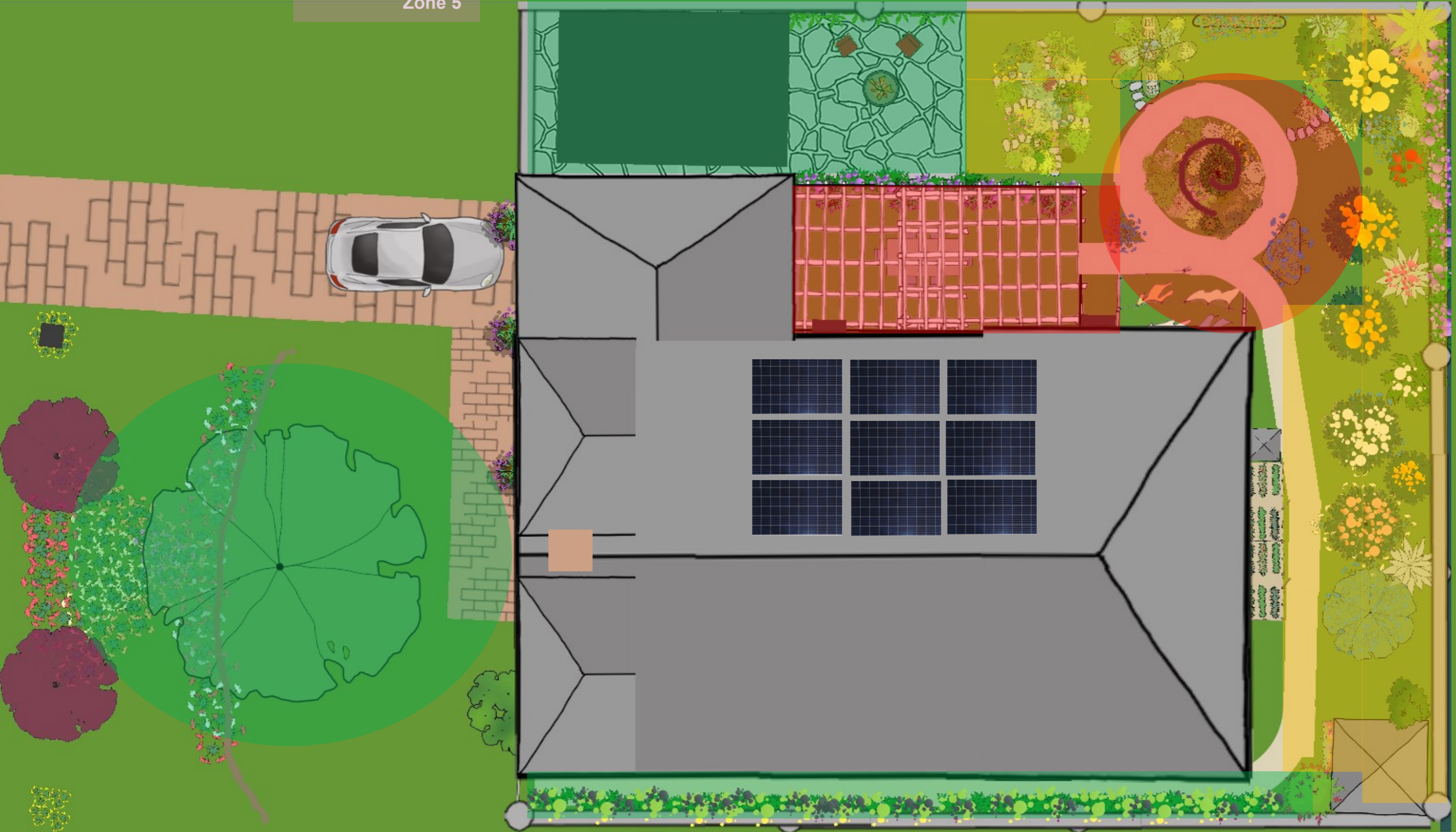
Already doing
Changed power company
Divested
Change super company

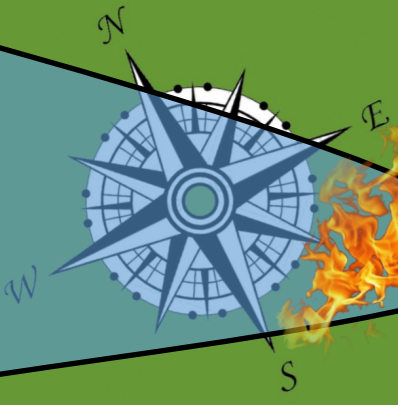




- Zone 1
- Zone 2
- Zone 3
- Zone 4
- Zone 5

Zones





High average 29
 Low average 3

North, east, and westerly

Annual rain—800.4 mm
 Days of rain—134 mm

Hours of sunlight
 Dec—14.5
 June—10

Subject to flooding and bush fire

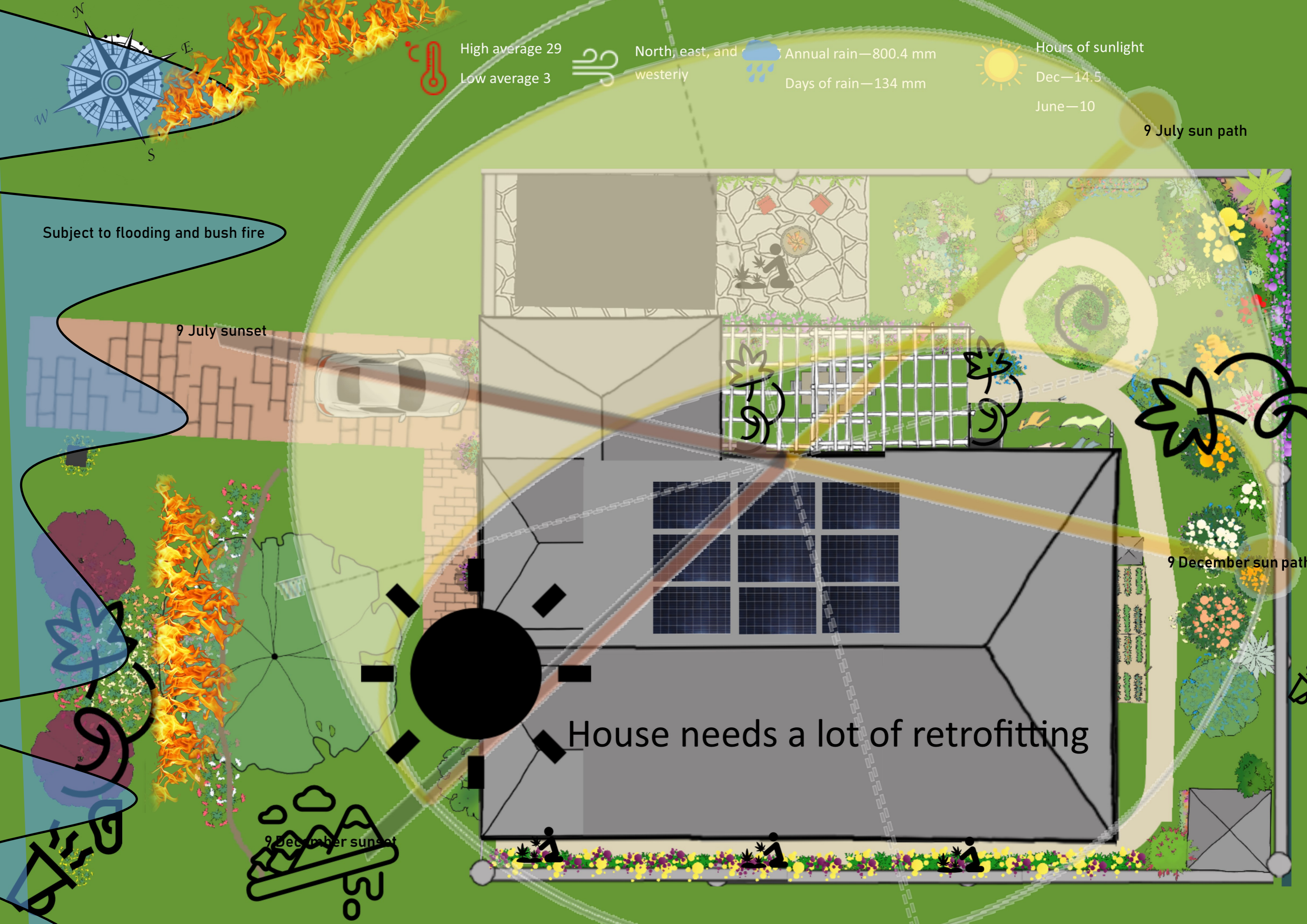
9 July sunset

9 July sun path

9 December sun path

9 December sunset

House needs a lot of retrofitting





Fire pit—alternative cooking

Keyhole veggie garden

Bee attractant beds

Crop rotation veggie bed
With quails

Herb spiral

Caravan

7-layer guild	
1	Canopy - Native Tamarind
2	lower tree - lemon
3	shrub - blackberry
4	herbaceous - various
5	roots - beets
6	ground cover - clover and Nasturtium
7	climber - grape

Fruit	
	Grapes
	Strawberry guava
	Mandarin
	Blood Orange
	Lemon
	Kumquat
	Feijoa
	Strawberry
	Youngberry
	Blackberry
	Blueberry
	Peach
	Passionfruit

Wicking beds

shed

Nut tree

Swale for slope





High average 29
Low average 3



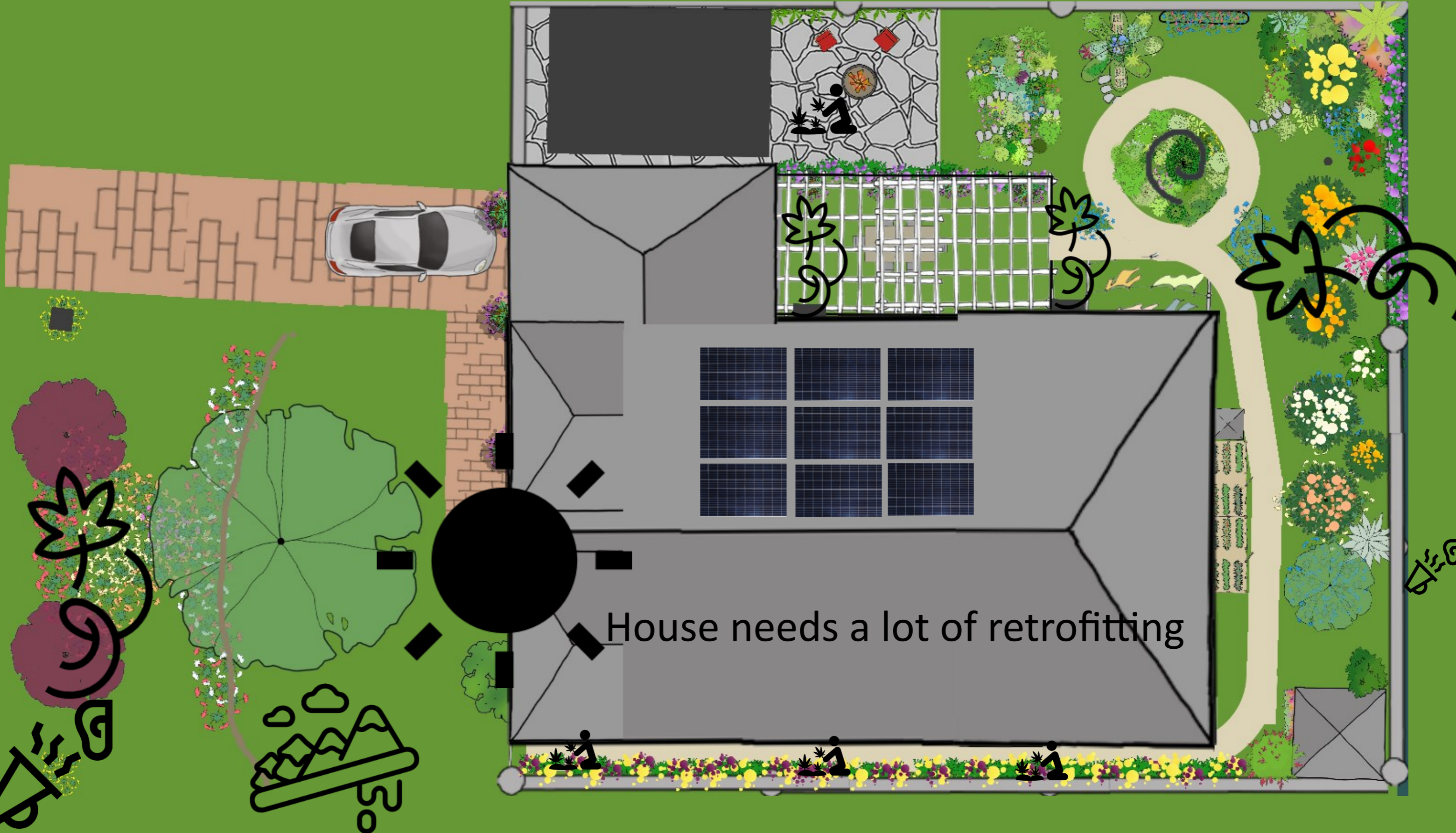
North, east,
and strong
westerly



Annual rain—800.4 mm
Days of rain—134 mm



Hours of sunlight
Dec—14.5
June—10



House needs a lot of retrofitting



High average 29
Low average 3



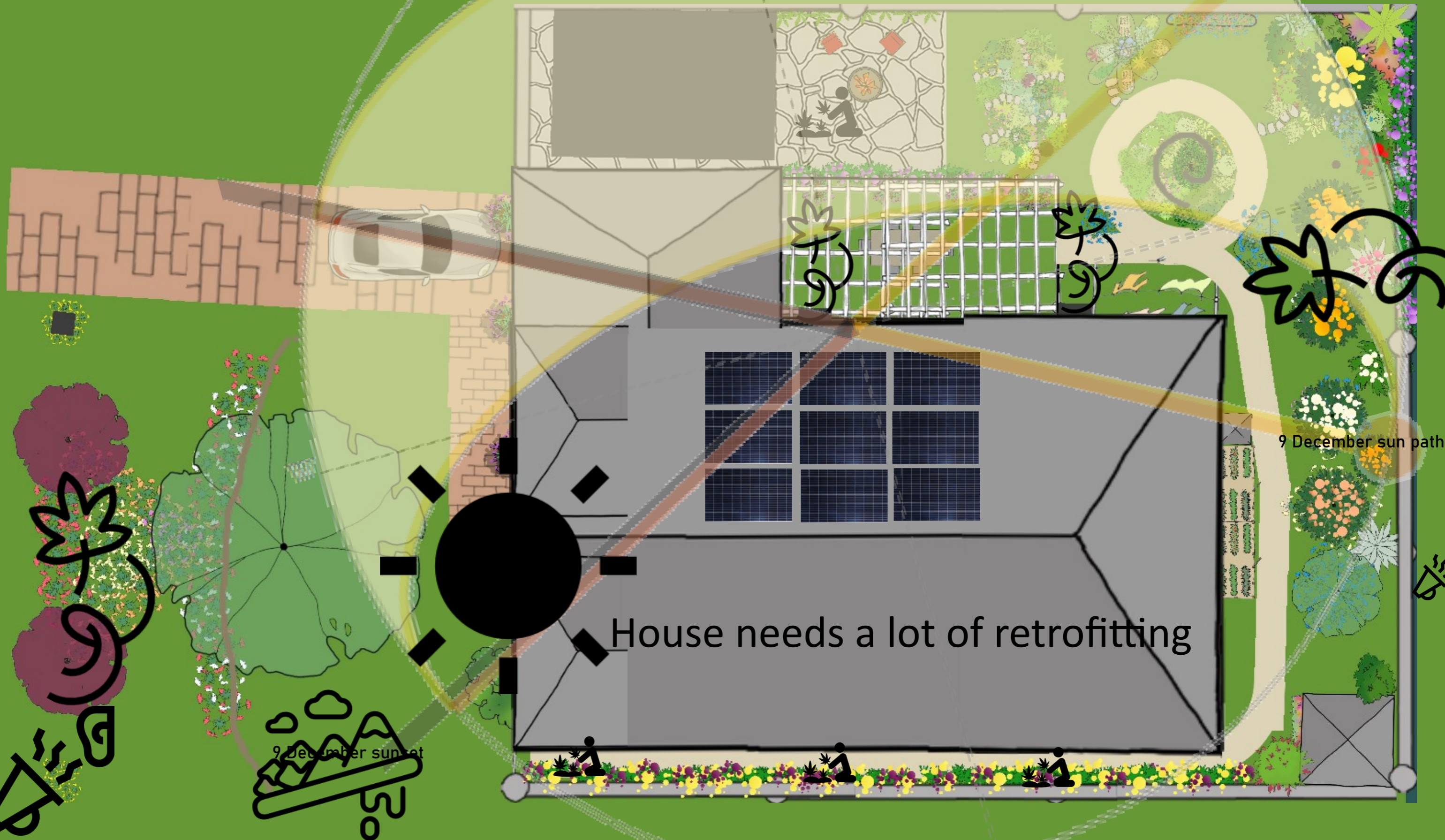
North, east, and
westerly



Annual rain—800.4 mm
Days of rain—134 mm



Hours of sunlight
Dec—14.5
June—10



House needs a lot of retrofitting

9 December sun path

9 December sun set



High average 29
Low average 3



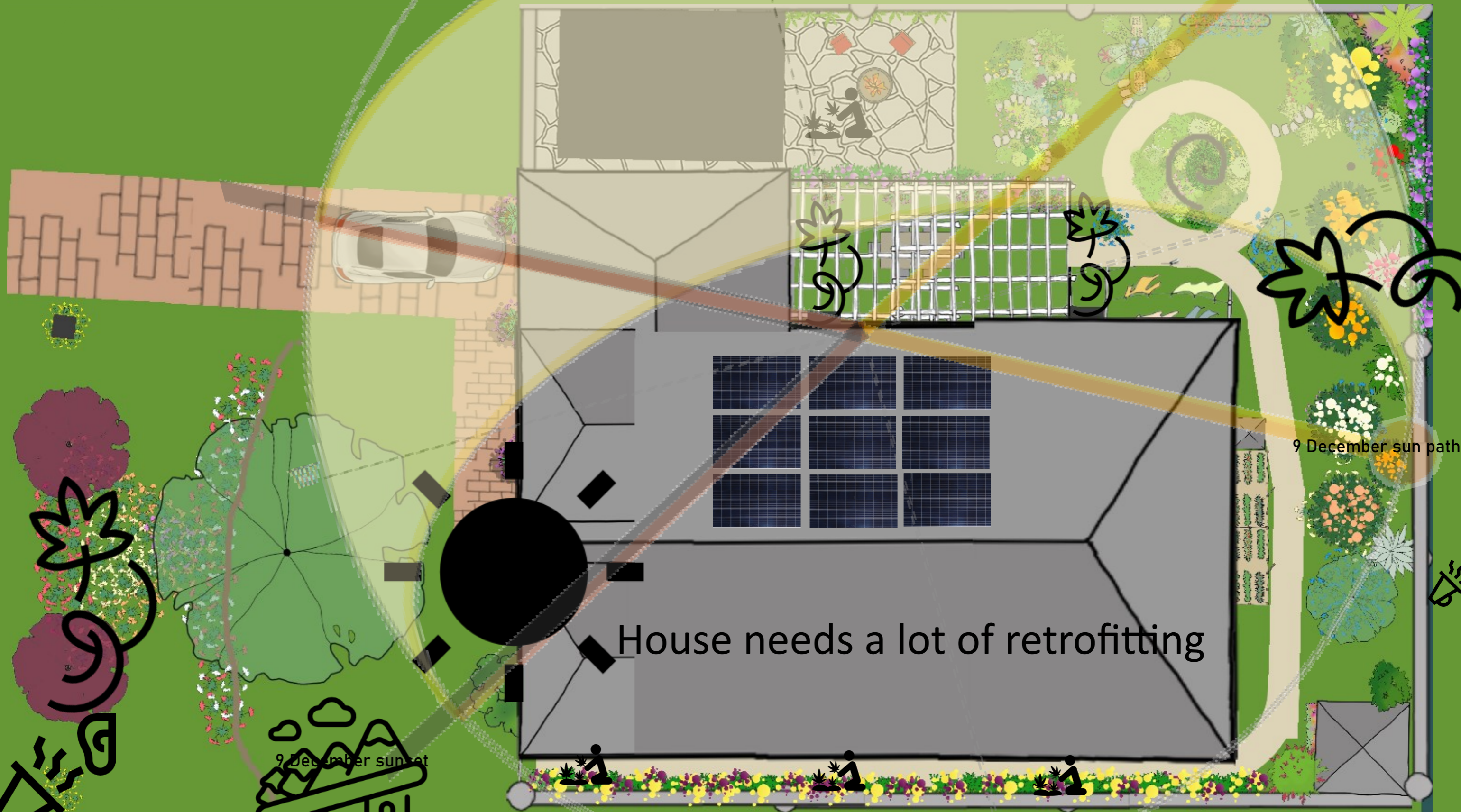
North, east, and
westerly



Annual rain—800.4 mm
Days of rain—134 mm



Hours of sunlight
Dec—14.5
June—10



House needs a lot of retrofitting

9 December sun path

9 December sun set



Care of the Earth





Care of People

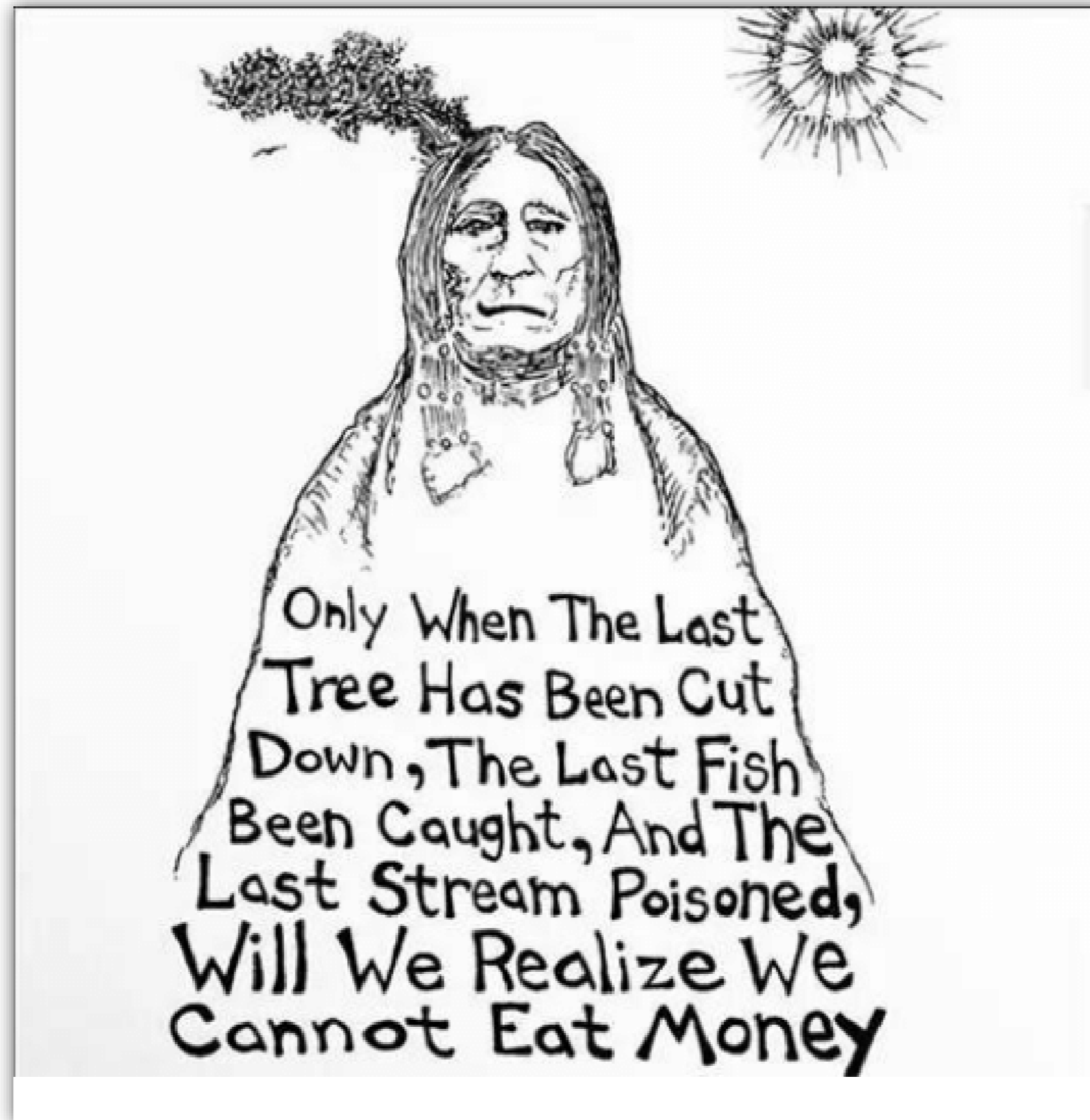




Fair Share



Thank you



Only When The Last
Tree Has Been Cut
Down, The Last Fish
Been Caught, And The
Last Stream Poisoned,
Will We Realize We
Cannot Eat Money